

Location, Location, Location...

You make money when you ENTER

Never pay RETAIL!

Most amateurs are right ...
at the wrong TIME.

Gann: Time more important than price.

Burns: Time IS price!

The Continuum of Risk

More confirmation **Less confirmation**
Better win/loss **Better R/R**



**You can combine entry types to
average the entry price**

**Ultimately you must decide on the best
approach for your personality**

3 Entries: Directional Change

Conservative to Aggressive

- 1. W.D. Gann: Safest Place to Enter: Actual Price Change**
- 2. Indicators “Indicate” a Change**
- 3. Anticipate a change without confirmation: Buy into selling; Short into buying**

ENTRY TECHNIQUE #1

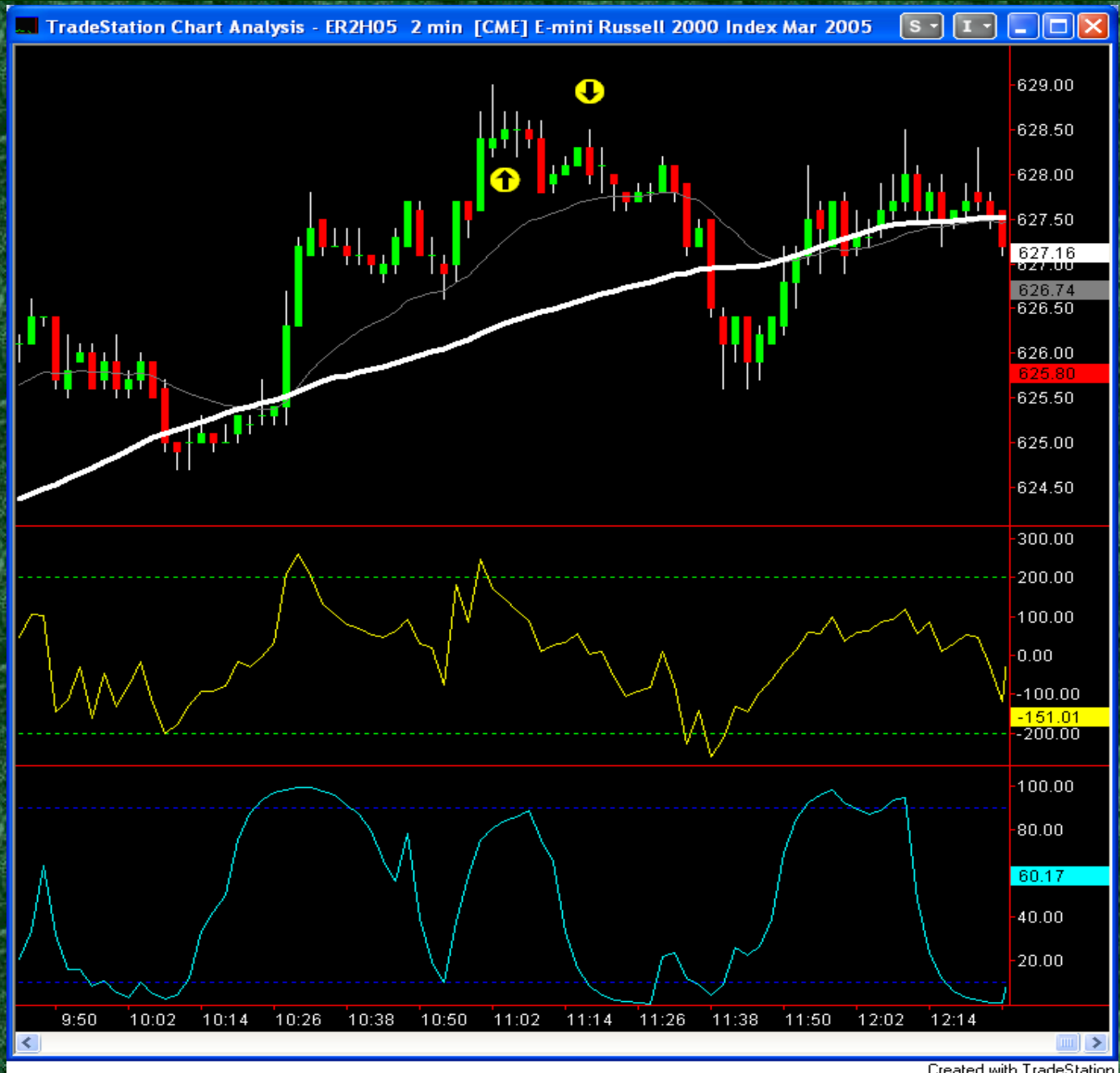
Wait for PRICE change

**Buy first Higher Low;
Short first Lower High**

**Waiting for the direction of price to
actually change before entry.**

More likely to be right, but get a later price

Waiting to
enter short
until you
have a
Lower High
helps
confirm the
trend
change
before you
enter, but
you get a
lower price.



ENTRY TECHNIQUE #2

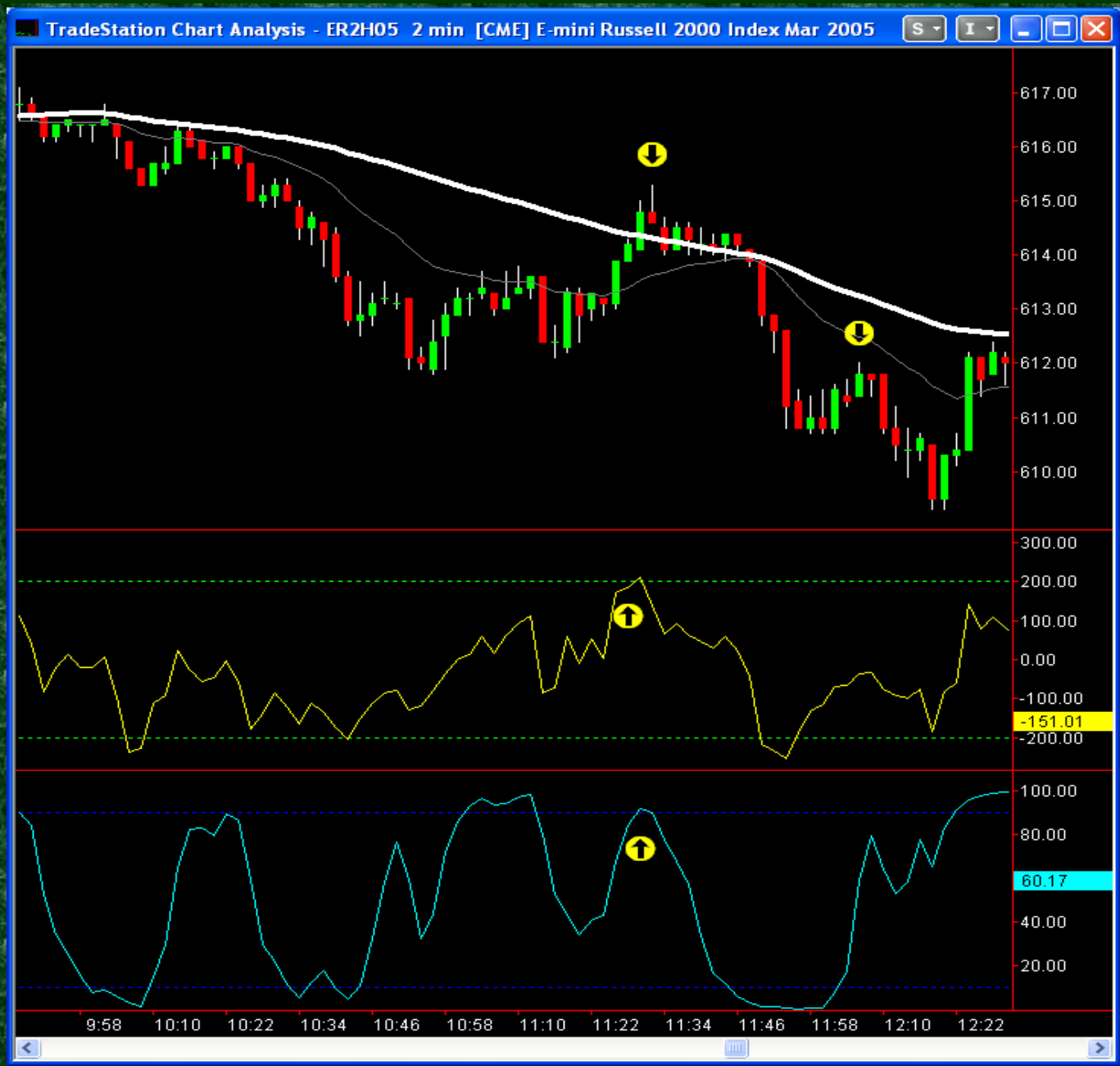
Using Indicators to Indicate Change

Sometimes a combination of indicators can signal a possible change of price BEFORE it occurs

Get an earlier price, but will get stopped out more often than if wait for price change

The
Oscillator
and CCI are
overbought
and
hooking
down,
indicating
that price
may soon
reverse
direction.

Compare
later entry
at Lower
High



ENTRY TECHNIQUE #3

Buy into Support; Short into Resistance

Professional-level high-SKILL entry

Not waiting for ANY confirmation

Least likely to be “right,” but provides a minute risk in the trade if handled well.

E.I.E.I.O Methodology

“Early In, Early In ... Out!”

Enter market BEFORE the crowd.

**Do what most traders are
uncomfortable and unwilling to do.**

**Enter without the comfort of
confirmation.**

**Concept #1
(continuations):**

**Support and
Resistance
Levels are
normally
PIERCED before
a price move
continues**



Concept #2 (reversals):

Highs and
Lows are
often pierced
before a
reversal in
price



Buying into
Selling;
Shorting
into Buying

Going
Long
BELOW
previous
Lows;
Going
Short
ABOVE
previous
Highs



Are E.I.E.I.O trades more risky?

Entering below the Low of the spike top bar would give you an entry of 627.70

Placing your stop 1 tick above the high of the bar would put it at 628.60

Your risk is 9 ticks, or \$90 per contract

The 20 EMA is at 628.10. Using 1 tick above the EMA as your entry gets you into the trade at 628.20.

Your risk is 4 ticks, or \$40 per contract
(less than $\frac{1}{2}$ of the “conservative entry”)



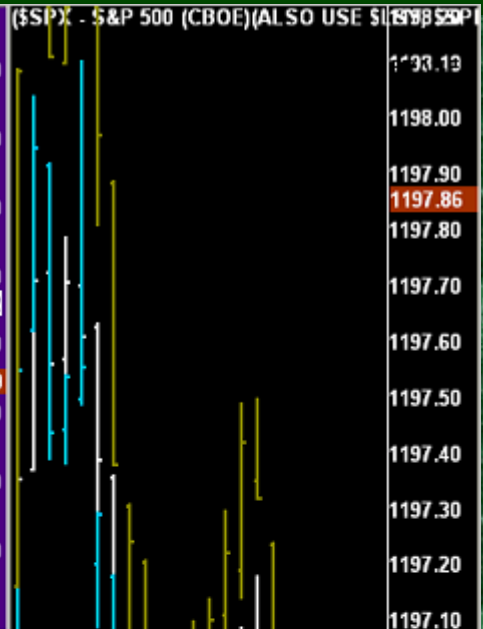
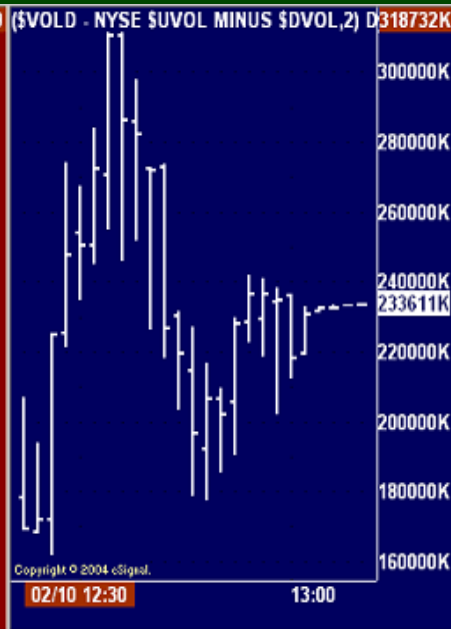
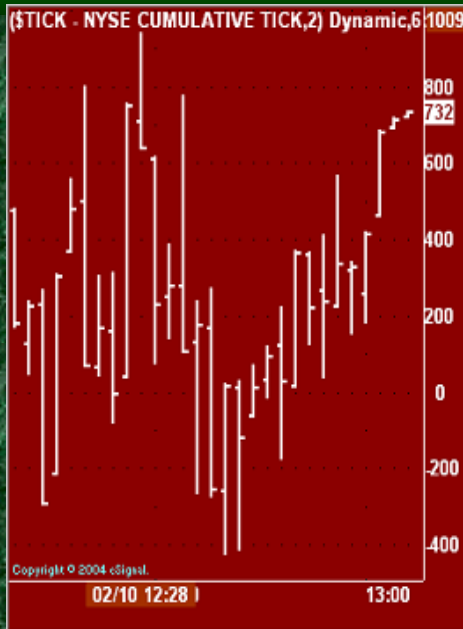
Using “Internal Indicators”

Can get you IN early or OUT early

Look for multi-market confirmation

There is no one indicator that always leads the others. Watch for what is leading NOW.

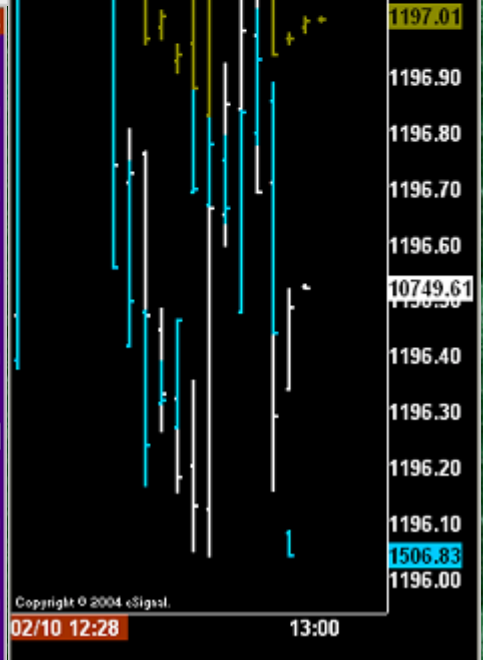
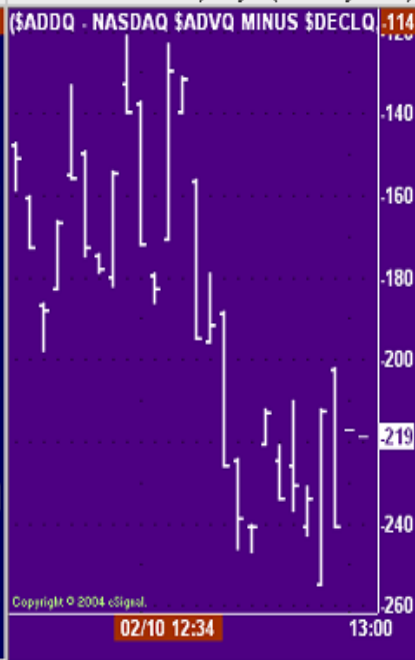
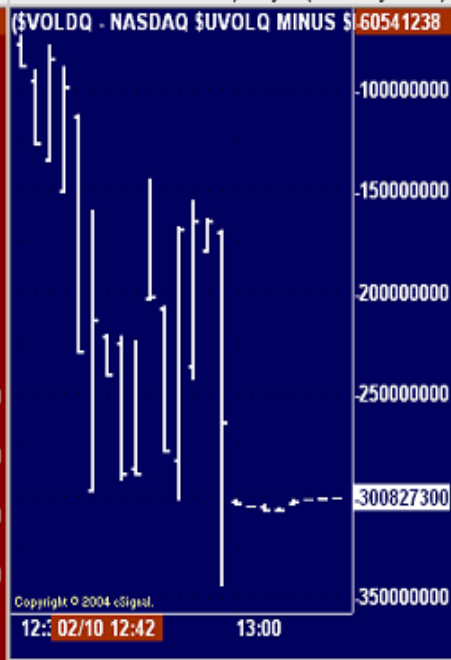
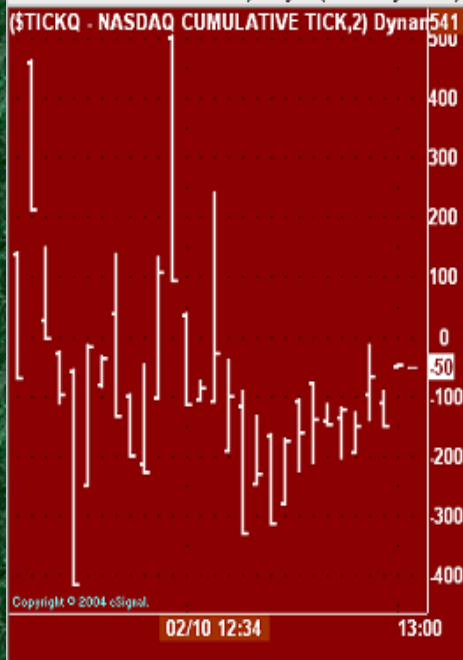
Excellent for exiting before stop is hit



Published by eSignal (www.esignal.com)

Published by eSignal (www.esignal.com)

Published by eSignal (www.esignal.com)



Published by eSignal (www.esignal.com)

Published by eSignal (www.esignal.com)

Published by eSignal (www.esignal.com)

Published by eSignal (www.esignal.com)

Barry Burns

Mentoring Services for Traders

Newsletter Pre-release special:

**FREE stock picks and finding
the RAGING BULLS/BEARS!**

(949) 497-8581

mmentors@hotmail.com